

# Combs Traffic Flow For Carpool

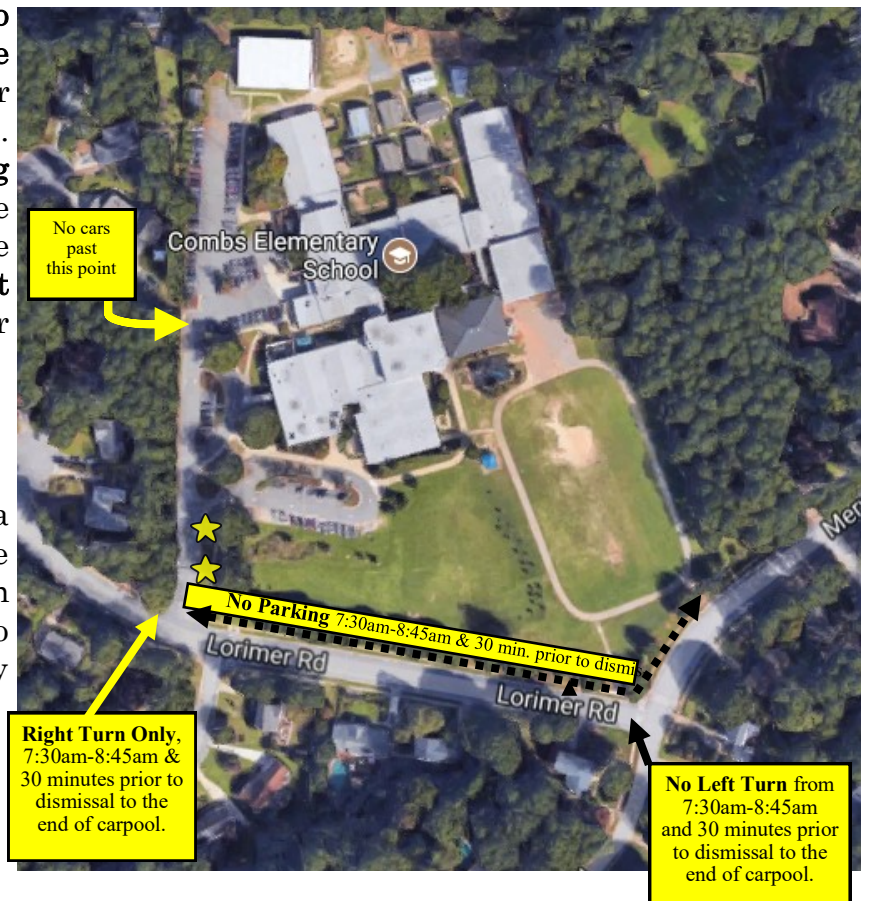
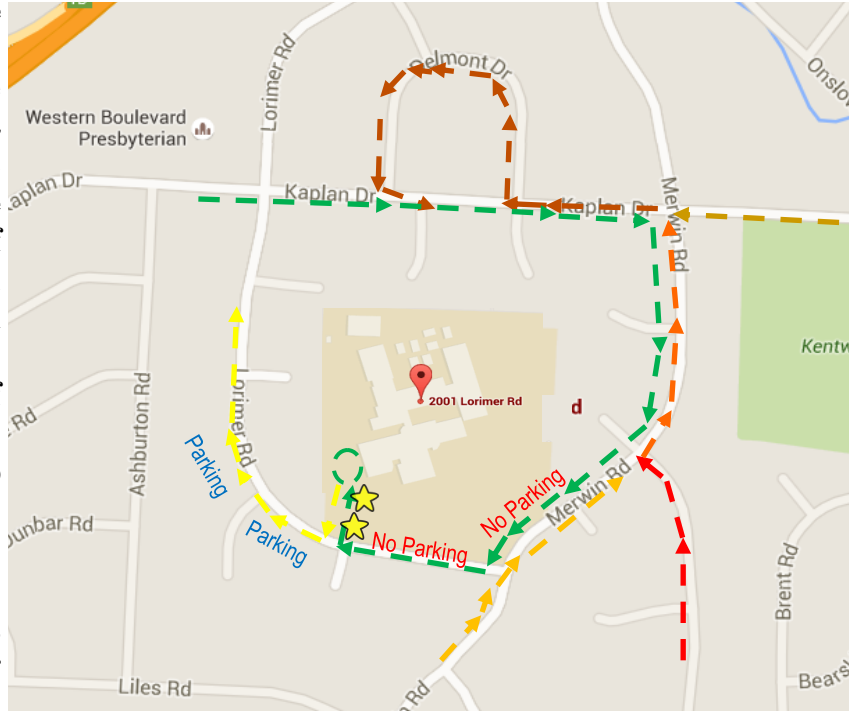
Please observe the following traffic flow pattern for drop-off and pick up of Combs students. Doing so will provide the quickest transit times and maximum safety for our students.

Cars should line up in the **far right lane** of Lorimer Road and Merwin Road, noting the direction of travel in the pictures. **Please pull as far to the right as possible**, so the school buses can pass safely. **Parking along the curb on these streets is prohibited** during the drop-off and pick up times of 7:30am to 8:45am & 2:30pm-3:45 pm. If you need to park to enter the school please park on Lorimer Road on the opposite side of the street from the school, as indicated. **Please do not park on the crosswalks**, so children using the crosswalks can be seen by the buses and cars.

**Only right hand turns are allowed from Merwin onto Lorimer, from Lorimer into the school parking lot, and from the school parking lot back onto Lorimer.** Left hand turns are **prohibited** from Merwin onto Lorimer to protect children in that crosswalk. **Left hand turns into the school parking lot are prohibited** – all cars must use the traffic flow pattern shown. Please **turn right out of the school parking lot** onto Lorimer to relieve congestion near the carpool lane.

**U-turns are not allowed.**

We are very fortunate to have a crossing guard stationed at the intersection of Lorimer and Merwin Roads. The crossing guard's job is to help our students cross a busy intersection safely. Please do not stop your car on the crosswalk and always follow the directions of our crossing guard.



Health Screening Areas